

Pitch:2.54X2.54mm(0.1"X0.1")
Female Header Side Entry Ring Angle Type

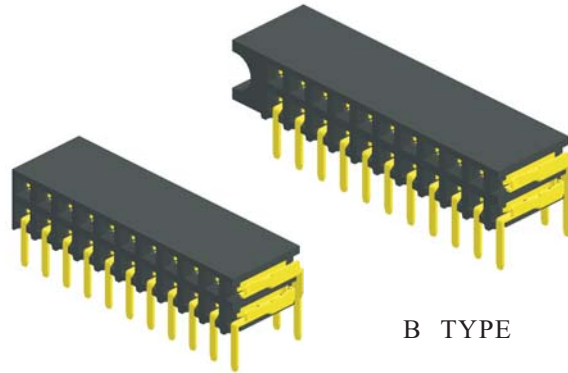
Specifications

Current Rating: 3.0 Ampere
Insulation Resistance: 1000MΩ Min
Dielectric Withstanding: 600V AC
Contact Resistance: 20mΩ Max
Operating Temperature: -40°C to +105°C

Materials

Contact Material: Phosphor Bronze
Insulation Material: Polyester,UL 94V-0
PBT

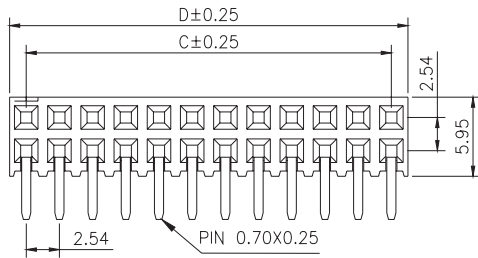
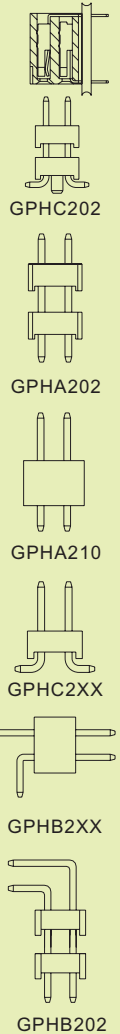
All materials must meet Greenconn requirement for environment protection



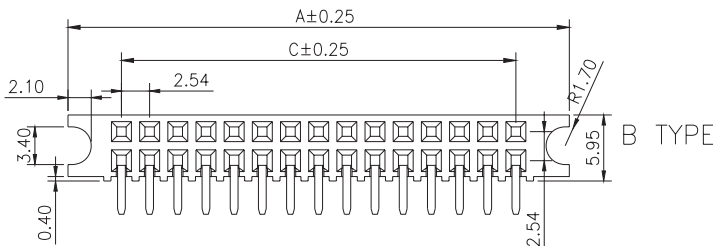
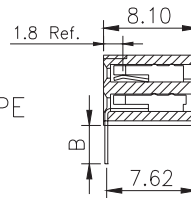
A TYPE

B TYPE

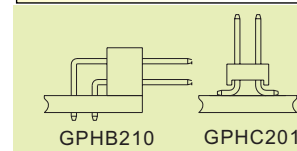
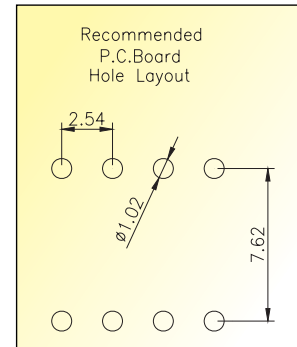
Mating with



A TYPE



B TYPE



PS:Suggested Mating Pin Length:4.0~7.5mm

No. of Pins/Row	Dimension Information			No. of Pins/Row	Dimension Information			No. of Pins/Row	Dimension Information			No. of Pins/Row	Dimension Information		
	C	D	A		C	D	A		C	D	A		C	D	A
03	5.08	7.62	14.72	13	30.48	33.02	40.12	23	55.88	58.42	65.52	33	81.28	83.82	90.92
04	7.62	10.16	17.26	14	33.02	35.56	42.66	24	58.42	60.96	68.06	34	83.82	86.36	93.46
05	10.16	12.70	19.80	15	35.56	38.10	45.20	25	60.96	63.50	70.60	35	86.36	88.90	96.00
06	12.70	15.24	22.34	16	38.10	40.64	47.74	26	63.50	66.04	73.14	36	88.90	91.44	98.54
07	15.24	17.78	24.88	17	40.64	43.18	50.28	27	66.04	68.58	75.68	37	91.44	93.98	101.08
08	17.78	20.32	27.42	18	43.18	45.72	52.82	28	68.58	71.12	78.22	38	93.98	96.52	103.62
09	20.32	22.86	29.96	19	45.72	48.26	55.36	29	71.12	73.66	80.76	39	96.52	99.06	106.16
10	22.86	25.40	32.50	20	48.26	50.80	57.90	30	73.66	76.20	83.30	40	99.06	101.60	108.70
11	25.40	27.94	35.04	21	50.80	53.34	60.44	31	76.20	78.74	85.84				
12	27.94	30.48	37.58	22	53.34	55.88	62.98	32	78.74	81.28	88.38				

Ordering Information

CSHB210 -	XX	XX	A	XXX	A1AC
	No. of Pins per Row	Standard Plating		Pin Length (B)	
	03~40	02 :Gold Flash		001 :B=3.00 (A TYPE)	
		Selective Plating		015 :B=3.20 (B TYPE)	
		01 :Tin			
		05 :Gold Flash / Tin			

*Standard Packaging:Tube