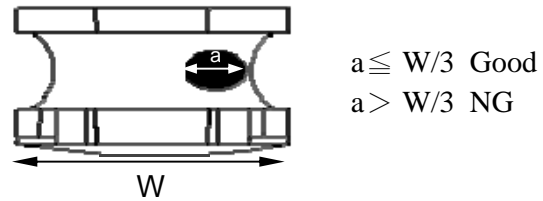


※Void appearance tolerance limit:



■ Dimensions: (mm)

Part No.	A	B	C	D	E	F
JNR 6045	6.0 ± 0.2	5.9 ± 0.2	4.5 Max.	4.7	5.7	1.6

■ Series List

No.	Part No.	MARK	L (μ H)	RDC Max. (m Ω)	Isat Max. (A)	Irms Max. (A)
1	JNR 6045-1R0N-M	1R0	1.0	18.2	8.50	6.00
2	JNR 6045-1R3N-M	1R3	1.3	20.8	8.00	5.20
3	JNR 6045-1R8N-M	1R8	1.8	23.4	7.00	5.00
4	JNR 6045-2R3N-M	2R3	2.3	27.3	6.00	4.50
5	JNR 6045-3R3M-M	3R3	3.3	24.0	5.00	4.00
6	JNR 6045-4R5M-M	4R5	4.5	40.3	4.00	3.70
7	JNR 6045-6R3M-M	6R3	6.3	49.4	3.80	3.50
8	JNR 6045-100M-M	100	10	61.1	3.00	2.80
9	JNR 6045-150M-M	150	15	100.1	2.30	2.30
10	JNR 6045-220M-M	220	22	149.5	1.90	1.70
11	JNR 6045-330M-M	330	33	188.5	1.50	1.50
12	JNR 6045-470M-M	470	47	286.0	1.30	1.30
13	JNR 6045-680M-M	680	68	429.0	1.00	1.00
14	JNR 6045-820M-M	820	82	533.0	0.90	0.90
15	JNR 6045-101M-M	101	100	650.0	0.80	0.80

1.Test Frequency: 100KHz,1V

2.Tolerance : N ± 30% ; M ± 20%

3.Isat : Based on inductance decrease 30% Max.(at 20°C)

4.Irms : Base on temperature increase 40% Max.(at 20°C)

5.Operating Temperature Range:-25°C to +120°C (Including self-temperature rise)

6.Storage Temp. Range : -40°C to +85°C

■ PACKAGE

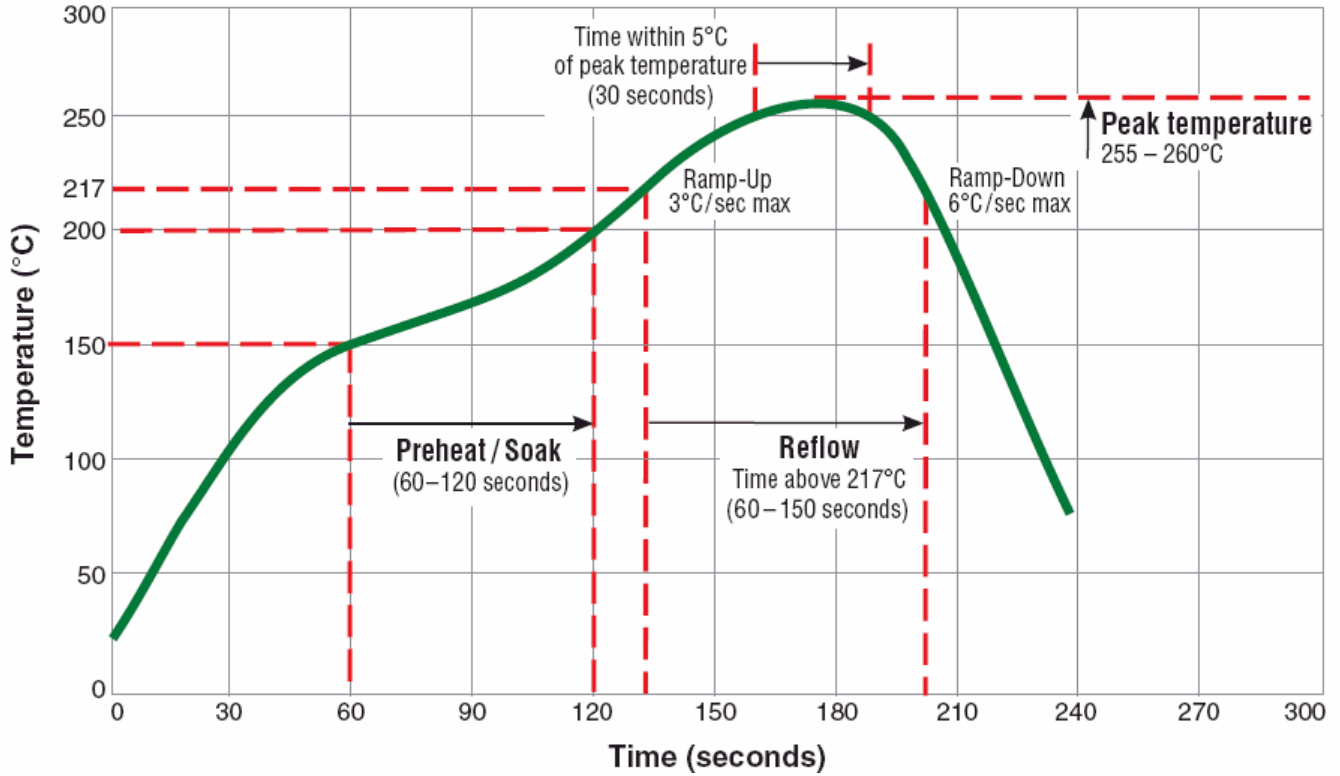
Type	JNR 6045
Q'TY/Reel	1000

1. RELIABILITY PERFORMANCE

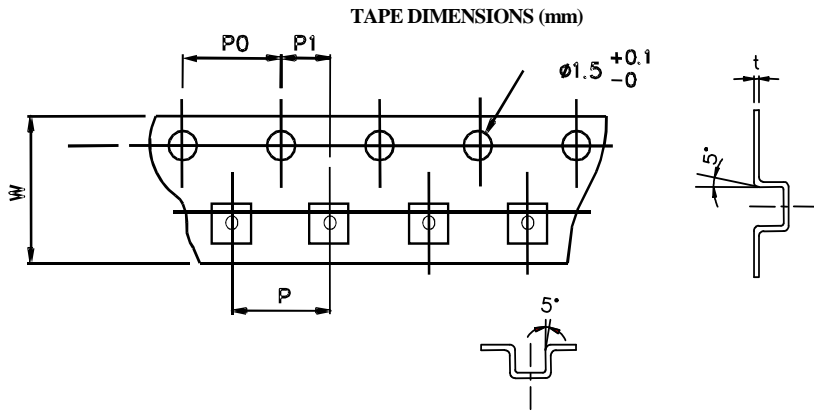
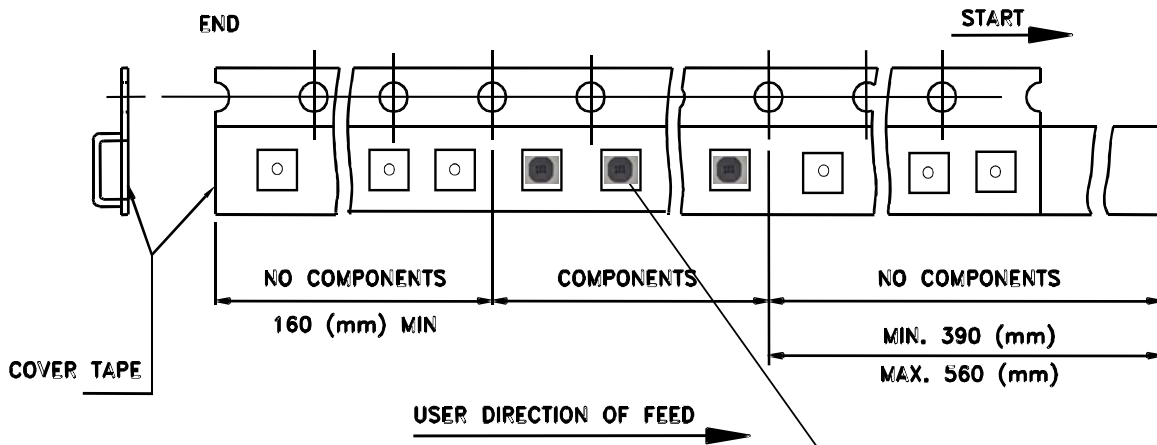
Test Item	Test Condition
Temp cycling	<ol style="list-style-type: none"> 1. +125°C±5°C for 30min ~ +25°C±5°C for 2hrs ~ -40±5°C for 30min 2. Total 10 cycles
Humidity	<ol style="list-style-type: none"> 1. Temp: +60°C±2°C 2. R.H: 90%±5%1 3. Total 96hrs
Thermal shock	<ol style="list-style-type: none"> 1. +125°C+3°C for 30min ~ -40°C for 30min ° 2. Time of temp shift 2min 3. Total 50cycles
High temperature storage	<ol style="list-style-type: none"> 1. Temp: +125°C±2°C 2. Total 48±2hrs
Low temp storage	<ol style="list-style-type: none"> 1. Temp -40°C±2°C 2. Total 48±2hrs
Salt spraying	<ol style="list-style-type: none"> 1. Chamber temp: 35°C 2. 5% concentration of salt sprayed 3. To erode for 24hrs
Vibrating test	<ol style="list-style-type: none"> 1. Freq: 10-55-10HZ 2. Amplitude: 1.5mm 3. Direction: X, Y, Z 4. Time: 2hrs for each direction, total 6hrs

2. TYPICAL RoHS REFLOW PROFILE

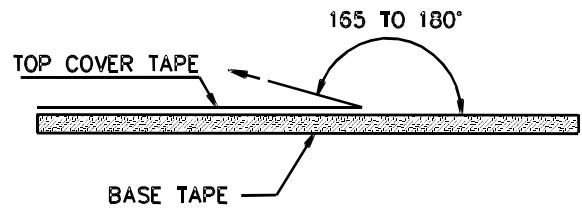
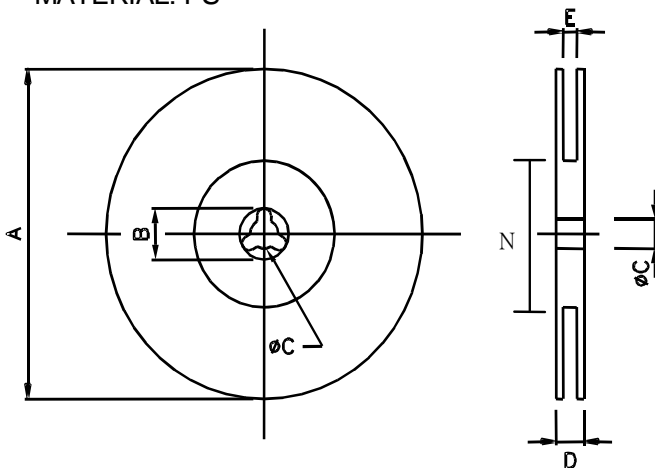
Typical RoHS Reflow Profile



3. PACKAGING



CARRIER TAPE REELS
MATERIAL: PS



THE FORCE FOR TEARING OFF COVER TAPE IS 25 TO 100 GRAMS IN THE ARROW DIRECTION.

Product Series	A	B	C	D	E	N	T	P1	P	P0	W
DIM.	330	21.0	13.0	21.5	16.5	100	0.40	2.0	12.0	4.0	16.0
TOL.	±3.0	± 0.8	±0.5	MAX	±0.1	MAX.	±0.1	±0.10	±0.10	±0.10	±0.30

UNIT:mm

Reel	2Reel/box	3box/carton
Q'ty (pcs)	Q'ty (pcs)	Q'ty (pcs)
1000	2000	6000