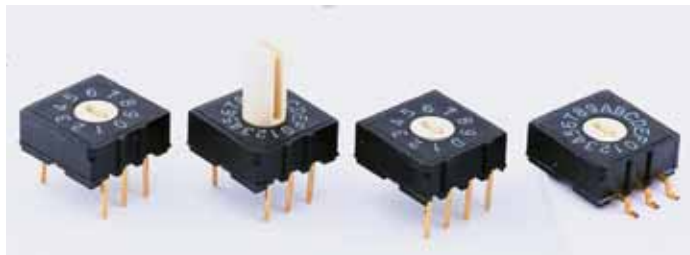


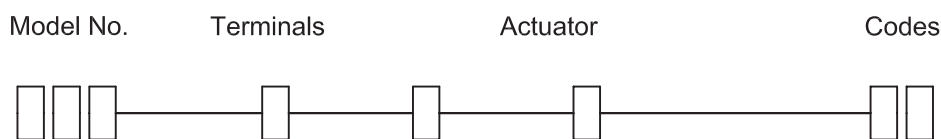
RH RV RM Series Rotary Code Switches



SPECIFICATIONS

Voltage Proof: 250VAC for 1 minute.
Switching Rating: 24VDC, 25mA.
Non-Switching Rating: 100mA, 50VDC.
Contact Resistance: (a) 100mΩ max. (Initial)
 (b) 200mΩ (final-after test)
Insulation Resistance: 100MΩ min, at 250VDC.
Operating Temperature Range: -25°C to 80°C.
Solderability: 230 ± 5°C 3± sec. 75%
Electrical Life: 200mΩ max, 20000 steps.

HOW TO ORDER



RH 4 = 4X1 A H = High Actuat or 10
 RV 3 = 3X3 Terminal : Gold Plated M = 3.2mm 16
 RM 2 = 3X2 Over Nickle

CIRCUIT CHART

		CODE			
TYPE	POSITION	1	2	4	8
		○ REAL CODE ● COMPLEMENTARY CODE			
010 (H)	0	●	●	●	●
	1	○	●	●	●
	2	●	○	●	●
	3	○	○	●	●
	4	●	●	○	●
	5	○	●	○	●
	6	●	○	○	●
	7	○	○	○	●
	8	●	●	●	○
	9	○	○	●	○
016 (H)	A	●	○	●	○
	B	○	○	●	○
	C	●	●	○	○
	D	○	●	○	○
	E	●	○	○	○
	F	○	○	○	○

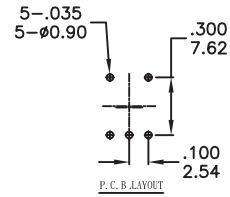
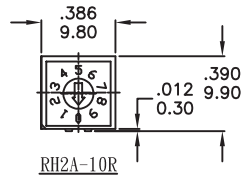
		CODE			
TYPE	POSITION	1	2	4	8
		○ ON ● OFF			
10 STEP	0	●	●	●	●
	1	○	●	●	●
	2	●	○	●	●
	3	○	○	●	●
	4	●	●	○	●
	5	○	●	○	●
	6	●	○	○	●
	7	○	○	○	●
	8	●	●	●	○
	9	○	○	●	○
16 STEP	A	●	○	●	○
	B	○	○	●	○
	C	●	●	○	○
	D	○	●	○	○
	E	●	○	○	○
	F	○	○	○	○

		CODE			
TYPE	POSITION	1	2	4	8
		○ REAL CODE ● COMPLEMENTARY CODE			
10 R	0	●	●	●	●
	1	○	●	●	●
	2	●	○	●	●
	3	○	○	●	●
	4	●	●	○	●
	5	○	●	○	●
	6	●	○	○	●
	7	○	○	○	●
	8	●	●	●	○
	9	○	○	●	○
16 R	A	●	○	●	○
	B	○	○	●	○
	C	●	●	○	○
	D	○	●	○	○
	E	●	○	○	○
	F	○	○	○	○

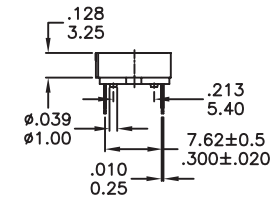
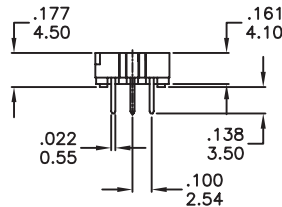
RH RV RM Series Rotary Code Switches



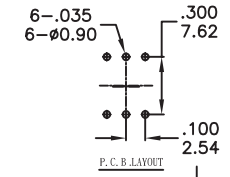
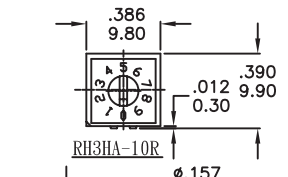
RH2A-XXX



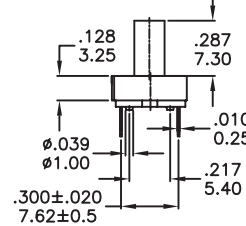
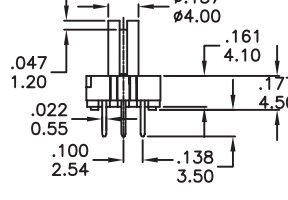
Available Mode No.
RH2A-10R
RH2A-16R
RH2A-16C



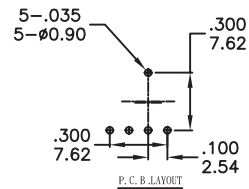
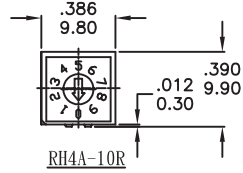
RH3HA-XXX



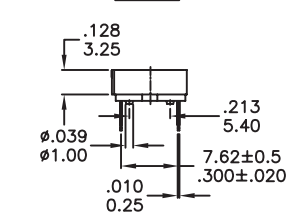
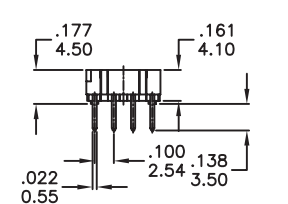
Available Mode No.
RH3HA-10R
RH3HA-16R
RH3HA-16C



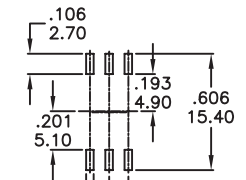
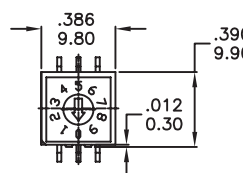
RH4A-XXX



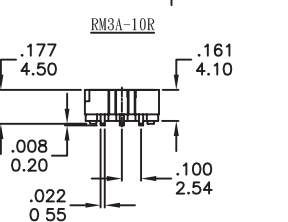
Available Mode No.
RH4A-10R
RH4A-16R
RH4A-16C



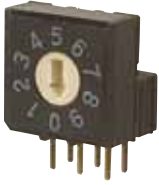
RM3A-XXX



Available Mode No.
RM3A-10R
RM3A-16R
RM3A-16C



RH RV RM Series Rotary Code Switches



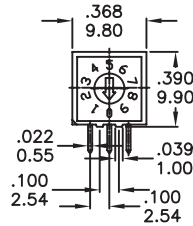
RV3A-XXX



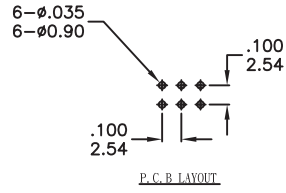
RV3A-16R



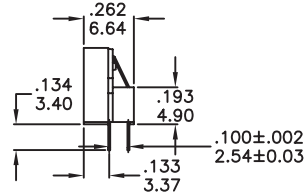
RV3A-16C



RV3A-10R



P.C.B. LAYOUT



Available Mode No.
RV3A-10R
RV3A-16R
RV3A-16C



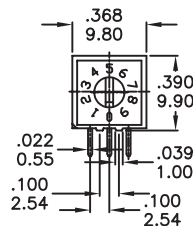
RV3HA-XXX



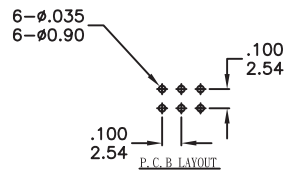
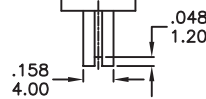
RV3HA-16R



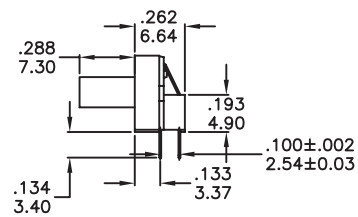
RV3HA-16C



RV3HA-10R



P.C.B. LAYOUT



Available Mode No.
RV3HA-10R
RV3HA-16R
RV3HA-16C



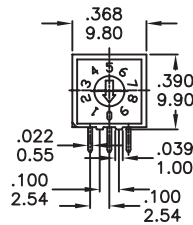
RV4A-XXX



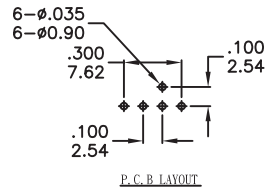
RV4A-16R



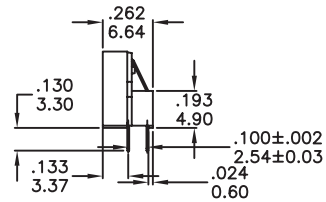
RV4A-16C



RV4A-10R



P.C.B. LAYOUT



Available Mode No.
RV4A-10R
RV4A-16R
RV4A-16C